

We worked
with **126 schools**
across the UK

1,947 children
in KS1 participated



32% of whom
have English as an
Additional Language



33% are eligible
for Pupil Premium

And, we worked with
**11 theatre
companies**



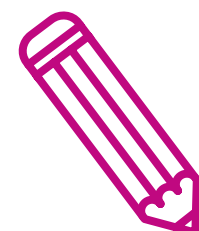
Teacher assessments showed that
of the participants involved...



84%
showed improvements
in **emotion behaviour**
and **conduct behaviour**



83%
showed improvements
in **speaking, listening**
and **learning**



88%
showed improvements
back in class



"A is a quiet, reserved girl. **It has been lovely to see her confidence grow this year.** She will now speak to adults and her peers and will instigate conversation. She will also tell you how she is feeling and will now ask for help. She is also beginning to form friendships with peers in her class which is lovely to see."

"U has made great progress this year in all areas. It has been particularly nice to see his **confidence and independence blossom.**"

"K has really grown in confidence in all areas. She now works more independently and has more confidence in her own abilities. She is also more confident when speaking to adults and will confidently ask for help when she needs it. **Her friendship group has grown.**"

"M's attention and focus have really improved. He is now taking part in every lesson and discussion and is so much more alert! He takes responsibility for his mistakes and is able to clearly explain what has been asked of him. **He is much better at communicating with teachers and peers** when something is wrong, and often seeks help when struggling."